



CIVIL INDUSTRIAL SUSTAINABLE

BUILDING TOMORROW'S INFRASTRUCTURE, TODAY.

Infrastructure built to perform.

Integrated development for the ground, structures, movement systems, utilities and environmental assets that make complex sites work. Since 1991, manufacturers, developers and public agencies — including Toyota Kirloskar, Bosch, TVS Motor, Molex and BBMP — have trusted AACP to take projects from first earth to final handover.

● DATA ANALYTICS ● BIM COORDINATION ● LEAN CONSTRUCTION ● GREEN CONSTRUCTION

35+

YEARS DELIVERING
INFRASTRUCTURE

14+

MARQUEE CLIENTS ACROSS
SECTORS

200+

ACRES RECLAIMED FOR BOSCH,
BIDADI

Zero Harm

SAFETY-FIRST EXECUTION
CULTURE



ONE PARTNER / CONNECTED DELIVERY

One team. Every critical site interface.

AACP Infrastructure Systems Pvt. Ltd. delivers civil, industrial and environmental infrastructure through practical engineering, disciplined execution and accountable project leadership. Since 1991 we have grown from external-development works for private manufacturers into a full-spectrum infrastructure partner trusted by some of India's largest industrial and real-estate names. We are reinvigorating traditional general contracting by pairing field discipline with data analytics, BIM, lean construction and green construction — eliminating cost overruns while striving for an injury-free workplace on every site we touch.

14+

MARQUEE CLIENTS

8

INTEGRATED CAPABILITIES

3+

PROJECTS IN ACTIVE DELIVERY

35+

YEARS ON THE GROUND

WHAT CLIENTS CAN EXPECT

Clear scope. Coordinated interfaces. Visible progress. Safe execution. Accountable close-out.



ENGINEERING IN THE FIELD

INSIDE

03

Who we are

04

Capabilities

05-09

Sector experience

10

Delivery workflow

11

Safety

12-14

Innovation & technology

15

Clients and endorsements

16

Leadership and governance

17-19

Pipeline, gallery and contact

A BENGALURU-BASED
INFRASTRUCTURE PARTNER,
SINCE 1991

Built on field experience. Focused on lasting performance.

AACP is a forward-thinking infrastructure development company delivering high-quality construction, precast and engineering solutions across diverse sectors. We are at an exciting growth stage of the business cycle, entering new markets and expanding our portfolio of projects and services.



With a strong emphasis on safety, strategic planning and execution, we transform complex challenges into reliable infrastructure that stands the test of time.

VISION

To shape future-ready infrastructure through innovation and responsibility.

MISSION

To deliver safe, efficient and sustainable infrastructure solutions.

VALUES

Safety, integrity, excellence, teamwork and sustainability — applied on every site, every day.

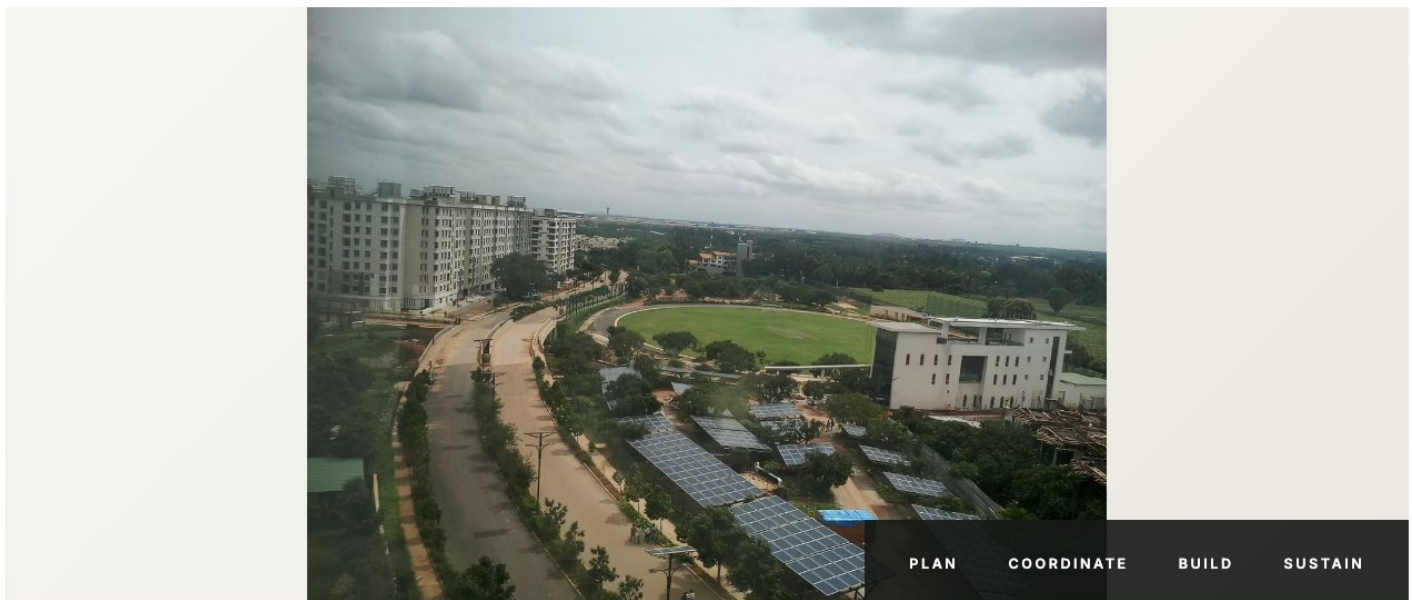


ONE PARTNER / CONNECTED DELIVERY

Capability across the complete site.

Our services connect the ground, structures, movement systems, utilities and environmental assets that make developments functional.

<p>01</p> <p>Civil Construction</p> <p>Foundations, structural works, and building construction with precision.</p>	<p>02</p> <p>Road Development</p> <p>Designing and building robust road networks for seamless connectivity.</p>
<p>03</p> <p>Urban Planning & Development</p> <p>Creating smart, livable, and sustainable urban environments.</p>	<p>04</p> <p>Drains & Pipelines</p> <p>Efficient drainage and pipeline systems for urban and industrial needs.</p>
<p>05</p> <p>Environment</p> <p>Sustainable environmental infrastructure and conservation projects.</p>	<p>06</p> <p>Earthworks</p> <p>Bulk excavation, grading, and site preparation services.</p>
<p>07</p> <p>Renewable Energy</p> <p>Infrastructure support for solar and renewable energy projects.</p>	<p>08</p> <p>External Development</p> <p>Comprehensive external development works for industries and townships.</p>



SECTOR PORTFOLIO / 05

Infrastructure designed around live operations.



FEATURED PROJECT

External Development at Molex

Roads / drainage / utilities / site development

Full-scope execution across survey, earthwork, civil interfaces, access planning and close-out documentation.

AACP delivers coordinated external works for manufacturing and industrial campuses where access, safety, programme and uninterrupted operations must work together.

SELECTED EXPERIENCE



01

Plant 1 Shuttle & CBU Yard Rectification

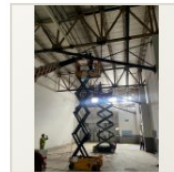
Toyota manufacturing environment



02

Bus Bay Parking & Drainage

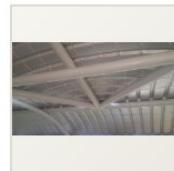
TVS Motor Company, Hosur



03

Structural Steel Strengthening

Bosch IT buildings



04

Walkway Shelter

Toyota Kirloskar Auto Parts



05

Parking Shelter Design

Molex industrial campus

SECTOR PORTFOLIO / 06

Surfaces built for movement, safety and endurance.



FEATURED PROJECT

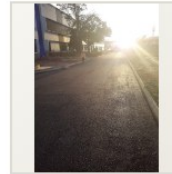
Emission Yard Road

Toyota Kirloskar Motor / 2020 / approx. 1,000 sqm

Full-scope execution across survey, earthwork, civil interfaces, access planning and close-out documentation.

From industrial access roads to yards and external-development packages, our work is sequenced around traffic, interfaces and long-term performance.

SELECTED EXPERIENCE



01

Phase II Road Works

Bosch industrial facility



02

Road Works

Assetz Group



03

Concrete Road Works

Industrial infrastructure



04

Surface Reconstruction

Transystem Logistics



05

Road External Development

Brigade Orchards

SECTOR PORTFOLIO / 07

Water infrastructure planned as a complete system.



FEATURED PROJECT

Rainwater Storage & Conveyance

Collection / storage / controlled movement

Full-scope execution across survey, earthwork, civil interfaces, access planning and close-out documentation.

AACP combines earthwork, civil structures, drains and conveyance networks to protect sites, capture water and improve long-term resilience.

SELECTED EXPERIENCE



01

Rainwater Harvesting Pond II

Toyota Kirloskar Auto Parts



02

NALA Stream Rerouting

Bosch



03

Drain Rectification & Construction

Toyota Kirloskar Motor



04

Pond Modification & Spillway

Water-management infrastructure



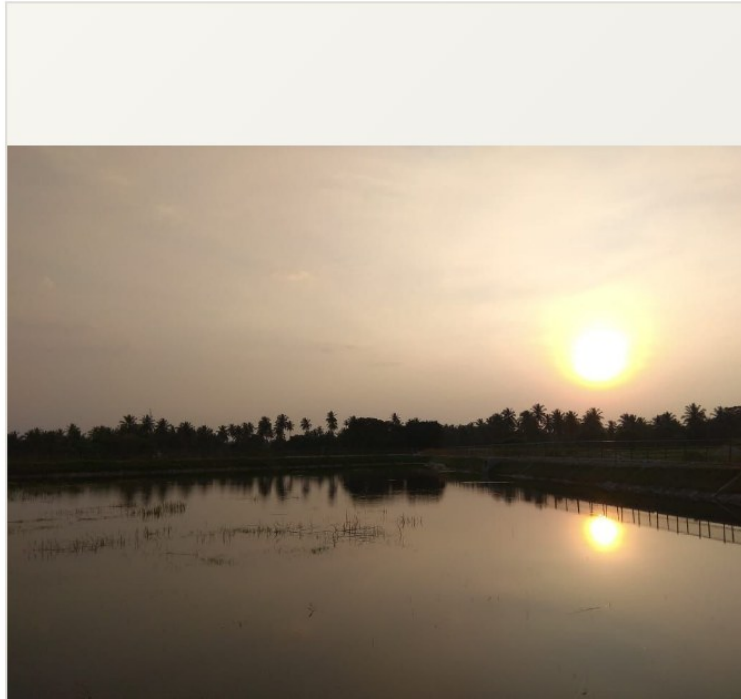
05

Rainwater Conveyance System

Industrial campus

SECTOR PORTFOLIO / 08

Engineering that leaves a positive legacy.



FEATURED PROJECT

Abbankuppe Lake Rejuvenation

Civil restoration / water resilience / public value

Full-scope execution across survey, earthwork, civil interfaces, access planning and close-out documentation.

Our environmental work brings civil execution together with ecological restoration, water security and renewable-energy infrastructure.

SELECTED EXPERIENCE



01

Veersandra Lake Development

Titan CSR



02

Afforestation Programme

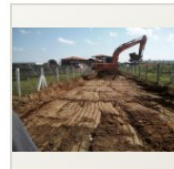
Environmental restoration



03

Solar Plant Infrastructure

Bosch Bidadi



04

Eco Zone Development

Industrial landscape



05

Sustainable Public Infrastructure

BBMP and corporate partners

SECTOR PORTFOLIO / 09

The right foundation for every project.



FEATURED PROJECT

Hard & Soft Rock Earthwork

Mantri Developers / excavation / site formation

Full-scope execution across survey, earthwork, civil interfaces, access planning and close-out documentation.

Bulk excavation, hard and soft rock, grading, reclamation and structural civil works delivered through disciplined planning and field control.

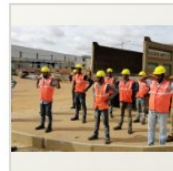
SELECTED EXPERIENCE



01

Land Reclamation

Bosch Bidadi



02

Compound Wall Construction

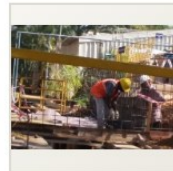
Bosch



03

Scientific Artwork Installation

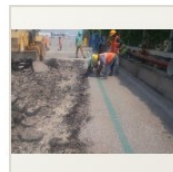
Specialist civil coordination



04

Sludge Barrel Store Yard

Industrial civil works



05

Civil Dismantling & Widening

Toyota Kirloskar Motor



CONTROL FROM DAY ONE

A clear route from requirement to reliable handover.

01 Discover

Understand operations, scope, interfaces and success criteria.

02 Define

Develop method, programme, responsibilities and controls.

03 Coordinate

Align design, procurement, access, safety and stakeholders.

04 Execute

Build through planned sequences, inspection and daily control.

05 Verify

Test, close observations and record completed work.

06 Handover

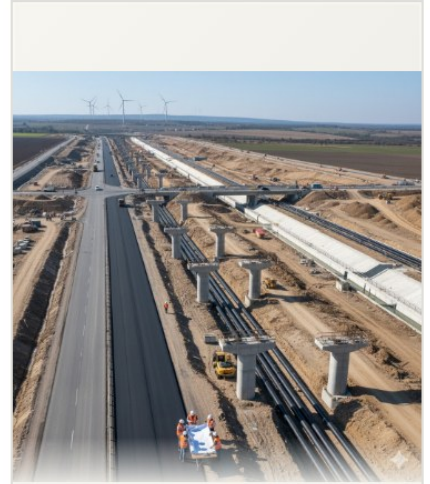
Transfer a clear, usable asset with accountable close-out.

SAFETY AT AACP INFRASTRUCTURE

Zero harm is the standard, not the exception.



TOOLBOX BRIEFINGS / CREW READINESS / SITE AWARENESS



PLANNED ACCESS / CONTROLLED MOVEMENT



DAILY DISCIPLINE / ZERO-HARM CULTURE

ZERO HARM CULTURE

Safety guides every project — from planning and design through execution and site supervision.

INJURY FREE ENVIRONMENT

Our I.F.E. approach prevents incidents through pre-planning, engagement, inspection and continuous training.

EHS MANAGEMENT

Environmental Health and Safety audits and controls protect people, communities and the environment.

TOOLBOX MEETINGS

Regular site briefings reinforce hazard awareness and safe behaviour across every crew.



DESIGN-BUILD

Earlier collaboration connects site experience with design decisions, value engineering and programme.

PRECAST MANUFACTURING

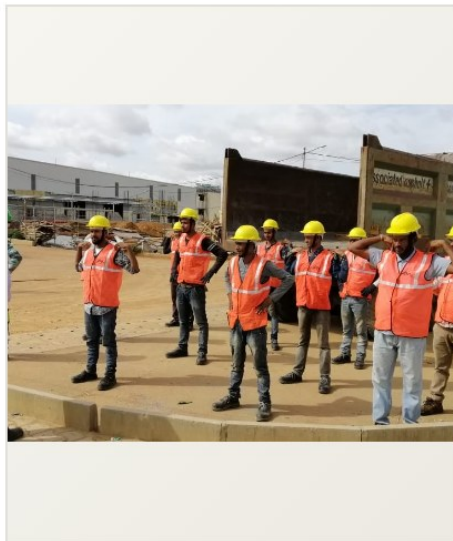
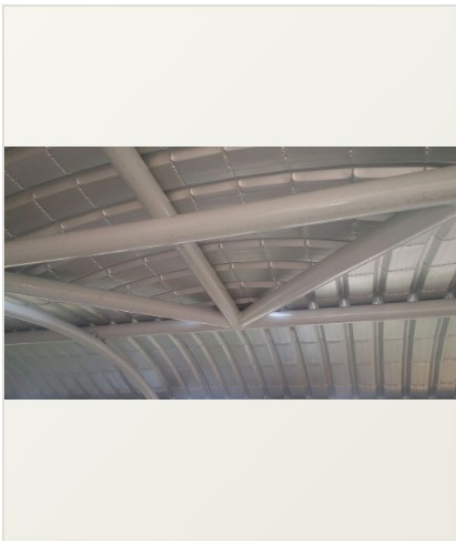
A dedicated precast unit, established in 2021, supports controlled production of repeatable site elements.

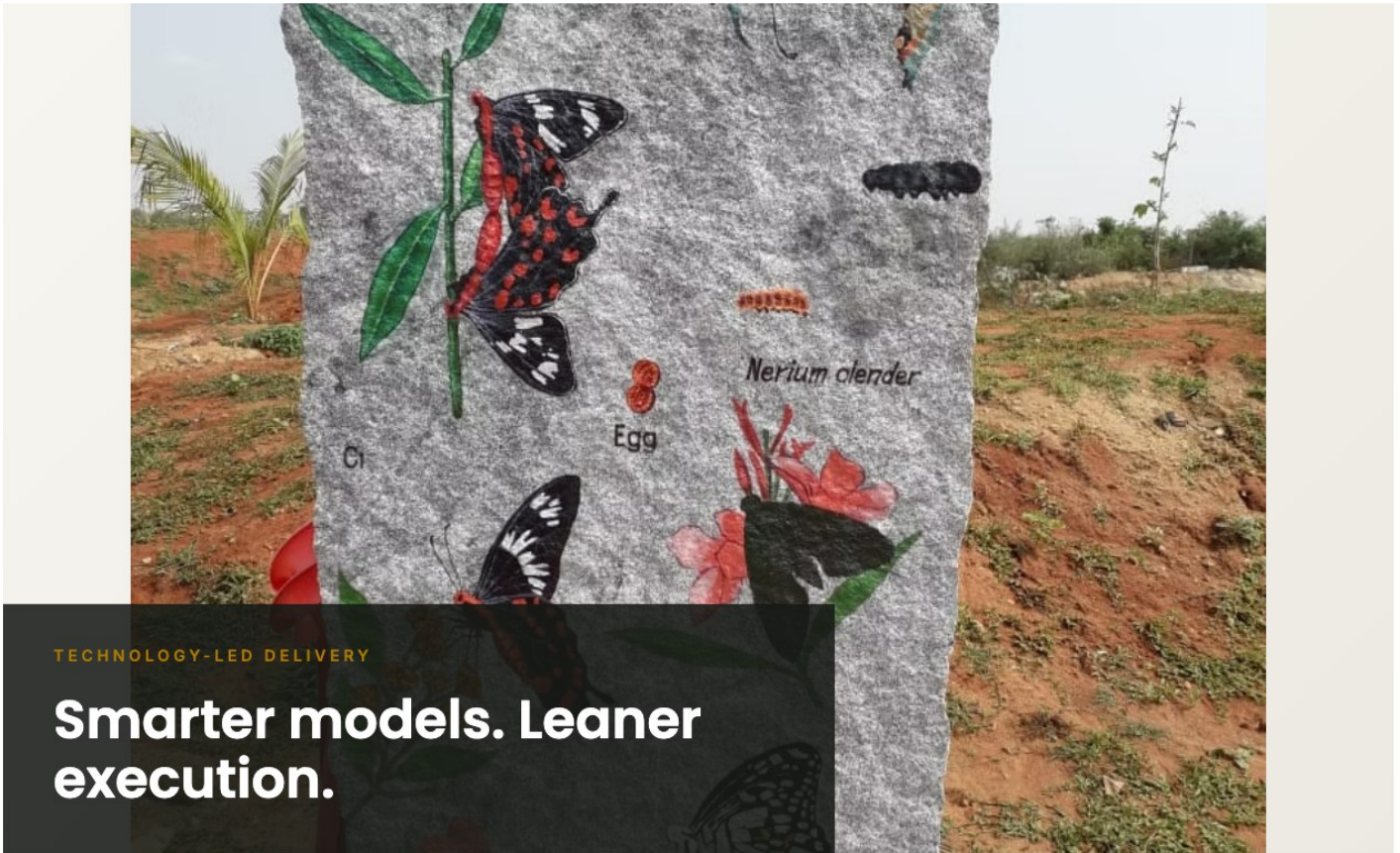
PRE-ENGINEERED BUILDINGS

Since 2024, AACP has expanded into PEB structures alongside concrete and structural construction.

CIRCULAR THINKING

Recycled and alternative materials are considered where they improve environmental and operational value.





TECHNOLOGY-LED DELIVERY

Smarter models. Leaner execution.

BUILDING INFORMATION MODELLING

We plan, design, construct and manage infrastructure through intelligent 3D/4D models — supporting clash detection, cost estimation, scheduling, safety analysis and site-logistics planning before work breaks ground.

CLASH DETECTION

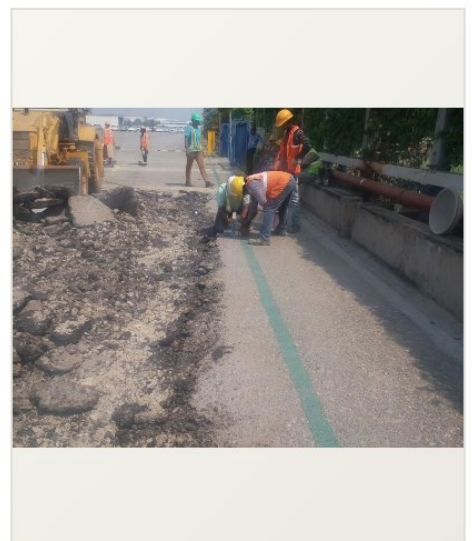
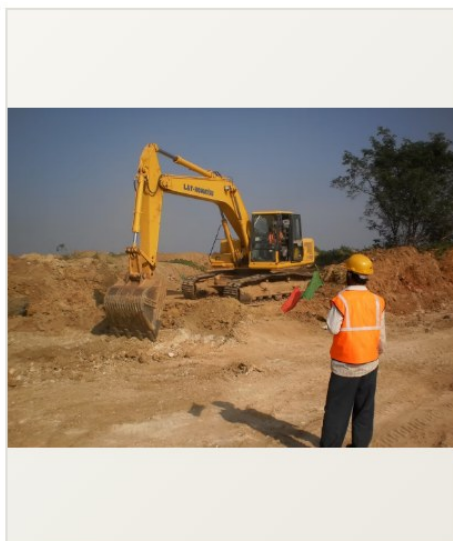
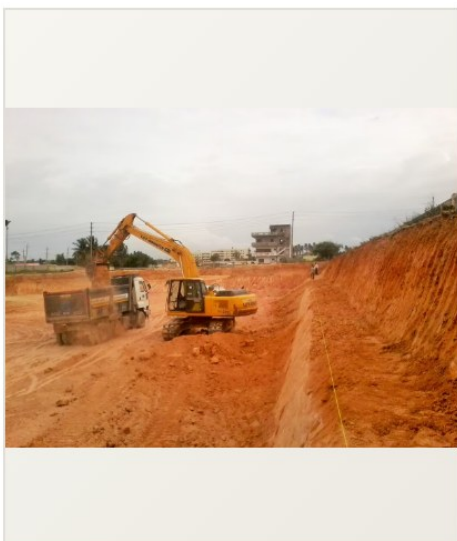
Coordinating models early surfaces conflicts between trades and disciplines before they become costly field problems.

LEAN CONSTRUCTION

We design the facility and its delivery process together, structuring work to maximise value and cut waste, and managing performance at the level of the whole project rather than isolated activities.

CONTINUOUS CONTROL

For us, control means actively making outcomes happen on site through daily oversight, not simply monitoring results after the fact.





BUILDING RESPONSIBLY

Engineering that leaves a richer environment behind.

GREEN CONSTRUCTION

Development is inevitable — but we believe it should leave future generations an environment that is richer, not poorer, than the one we found. We have adopted Green Construction practices and are working toward LEED Gold or higher certification across our portfolio.

WATER & LAND RESTORATION

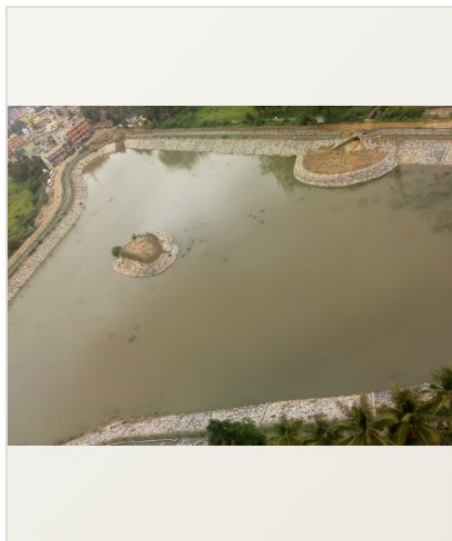
From the Abbanakuppe and Veersandra lake rejuvenations to 200 acres reclaimed for Bosch, Bidadi, our environmental work restores as much as it builds.

RENEWABLE-ENERGY INFRASTRUCTURE

Earthwork, road works and civil infrastructure for solar installations support our clients' shift toward renewable energy.














AFFORESTATION & ECO-ZONES

Afforestation programmes and eco-zone development sit alongside our civil works, returning green cover to the sites we touch.



TRUST EARNED THROUGH
DELIVERY

Experience across demanding client environments.

 L&T	 UB Group	 NCC	 Bosch	 Prestige	 Mantri	 Adarsh Developers
 Sobha	 Brigade Group	 WABAG	 Toyota	 Shapoorji Pallonji	 Simplex Infrastructures	 Quess

“

The performance of the agency in the execution of Air Force Runway extension at Yelhanka was found to be good and having experienced staff, they have completed the project in time and to our Airforce Officers satisfaction.

P.J SHAH
ANUPAM BUILDERS

“

With their most technically experienced staff for the road works, they have completed the project in time to our client's satisfaction. We wish them all the success in their future endeavours.

K. KULENTHIRAN
MISTRY ARCHITECTS

“

The work done by AACP in the execution of deep earthwork excavation for our Mantri project at Malleshwaram was done very well by their talented staff.

PRASAD BHORE
MANTRI DEVELOPERS



LEADERSHIP / GOVERNANCE

Guided by experience. Driven by accountability.

AACP is led by a board that combines decades of on-ground construction experience with a disciplined approach to growth, governance and client delivery. Their combined leadership spans more than three decades of field execution — from early industrial development work in the 1990s to

today's diversified precast, PEB and sustainable-infrastructure portfolio. Under their direction, AACP has grown from a single-site contractor into a full-spectrum infrastructure partner without losing the hands-on, accountable culture the company was built on.



R Srinivasa Reddy

Managing Director

Sets strategic direction for AACP, owns client relationships at the highest level and is personally accountable for delivery standards across the project portfolio.



Uma Maheshwar Reddy

Managing Principal

Drives day-to-day operations, technical planning and the execution discipline applied across every site — from mobilisation to final handover.

35 YEARS OF GOVERNANCE / OUR JOURNEY

1991

Founded to execute external development works for private manufacturers and developers.

1996

Began our long-standing partnership with Toyota Kirloskar Motor at Bidadi.

2006

Delivered deep excavation works for Mantri's landmark Mantri Mall project.

2011

Completed 200 acres of land reclamation and nala rerouting for BOSCH, Bidadi.

2016

Incorporated as AACP Infrastructure Systems Pvt. Ltd.

2021

Launched a dedicated precast manufacturing unit.

2023

Ventured into concrete and structural building construction.

2024

Expanded into Pre-Engineered Building (PEB) structures.

A BROAD RECORD / AN ACTIVE PIPELINE

Work in progress, backed by repeat experience.

01
IN PROGRESS

TVS Motor Company

Bus Bay Parking & Drainage Infrastructure - dedicated bus bay parking and RCC drainage infrastructure enhancing employee safety.

TVS MOTOR COMPANY, HOSUR

02
IN PROGRESS

Siemens Healthcare Pvt. Ltd.

External Development Works including civil infrastructure, drainage systems, and road works.

SIEMENS HEALTHCARE, ELECTRONIC CITY

03
IN PROGRESS

Hotel Construction Project

Civil construction and infrastructure development for hospitality project.

HOTEL PROJECT, BOMMANAHALLI

SELECTED PROJECT INDEX

01 Walkway works — Toyota Kirloskar Motor

03 Emission yard road — Toyota Kirloskar Motor

05 Rainwater harvesting pond — TKAP

07 Phase II road works — Bosch

09 External development — Molex

11 Road works — Assetz Group

02 Drain rectification — Toyota Kirloskar Motor

04 Walkway shelter — Toyota Kirloskar Auto Parts

06 NALA rerouting — Bosch

08 Solar plant infrastructure — Bosch Bidadi

10 Parking shelter — Molex

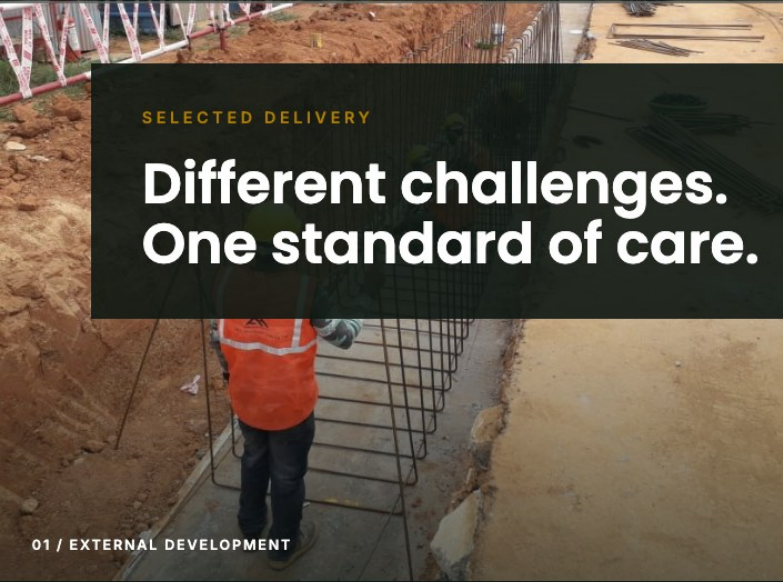
12 Lake development — Titan CSR





SELECTED DELIVERY

Different challenges. One standard of care.



01 / EXTERNAL DEVELOPMENT



02 / CONCRETE ROADS



03 / WATER SYSTEMS



04 / ECO-ZONE DEVELOPMENT



05 / BUS BAY INFRASTRUCTURE



06 / LAKE REJUVENATION



BUILD WITH AACP

Let's talk about your next project.

Civil construction, industrial infrastructure, external development, water systems, precast and sustainable site works—planned and delivered by one accountable team.

NEW BUSINESS

info@aacpinfra.com

HEAD OFFICE

Bangalore, Karnataka, India

ONLINE

aacpinfra.com



35+ YEARS OF FIELD EXPERIENCE

Infrastructure that performs long after handover.

Bengaluru / Karnataka / India

[LinkedIn](#) [Instagram](#) [Facebook](#)

START A CONVERSATION

